

## Fall Presenter

SEPTEMBER 17, 2024

*Vladislav Yeliseyev*



**“There should be something not said in a painting, something that gives the luxury of interpretation to the viewer. And therein lies the poetry.” - Vladislav Yeliseyev**

Vladislav Yeliseyev is a classically trained Russian-American artist and teacher. Born in Russia, Vlad now lives in the United States. He honed his skills at the Moscow Institute of Architecture, earning a master's degree. His unique approach, blending his architectural precision with the fluid dynamics of watercolor, has established him a notable career, particularly in plein air painting. Vlad's work is characterized by the ability to capture natural light, earning him international acclaim. He has a particular talent for turning everyday scenes into compelling narratives, often choosing non-traditional settings for his compositions.



In addition to his personal art practice, Vlad is committed to education. He founded the Renaissance School of Art in Sarasota, Florida, where he teaches classical painting techniques to both children and adults. With expertise and an engaging teaching style, he is in high demand for workshops and demonstrations.

Vladislav Yeliseyev is our Juror/ ONLINE Workshop Instructor for our 84th Annual International

Open, our most important event of the year, and we are excited he will be our demo artist at our general meeting on September 17th. Join us! Vlad's unusual style and personality make him an inspiring partner with NWS. He has many awards and has received signature membership status from prominent art societies such as the National Watercolor Society and the American Impressionist Society.

[www.yeliseyevfineart.com](http://www.yeliseyevfineart.com)





**NORTHWEST  
WATERCOLOR SOCIETY**

**The Northwest Watercolor  
Society Newsletter**

P.O. Box 50387  
Bellevue, WA 98015-0387  
www.nwws.org

**ACTING PRESIDENT**

Deborah Roskopf  
president.nwws@nwws.org

**ACTING VICE PRESIDENT**

Molly Murrah  
nwws.host@nwws.org

**CORRESPONDING SECRETARY**

Conny Spann  
correspondingsec@nwws.org

**RECORDING SECRETARY**

Peggy Willett  
secretary@nwws.org

**TREASURER**

Shirley Jordan  
shirleyeejordan@icloud.com

**ATTORNEY**

Niloofer Zerai Henzaki  
Fox Rothschild LLP  
nhenzaki@foxrothschild.com

**NEWSLETTER EDITOR**

Katherine L. Wright  
[NWWSHotPress@gmail.com](mailto:NWWSHotPress@gmail.com)

**NEWSLETTER DEADLINES:**

December 1 for Winter issue  
March 1 for Spring issue  
June 1 for Summer issue  
September 1 for Autumn issue

Email your items to:

[NWWSHotPress@gmail.com](mailto:NWWSHotPress@gmail.com)  
(Subject line: NWWS Hot Press)

Please send new memberships,  
changes of address, and all invoices to:

Shirley Jordan  
P.O. Box 50387  
Bellevue, WA 98015-0387  
treasurer@nwws.org

**P R E S I D E N T ' S M E S S A G E**



You've heard the saying, "meet someone where they are." If we expand that to, "meet artists where they are and where you see them going and growing," everyone has a clearer picture of the NWWS tent. A larger tent allows for everything so familiar and exciting about working with watercolor as we've loved it for the past 84 years at NWWS, and allows for beautiful successes that come from doing things differently. That makes for

a continuum with room for everyone to find a creative seat. No matter where you choose to settle on this continuum, our intention is to give you wiggle room.

The "Experimental" spot on the continuum might bring to mind a flying fingered artist with an array of materials at their fingertips, pushing toward the unknown as the paint water gets thicker and thicker. At the other end, "traditional" watercolor practice brings to mind a tighter, more sequential process. Neat and tidy palette. Frequently changed double-chambered water pail. Proper color charts at hand.

Neither of those stereotypes is true, thankfully. We are each a variation, especially those we easily call "traditional" artists. They can be wildly experimental and find success in challenging phrases like "paint dark to light" or "maintain transparency." Jeannie McGuire beautifully uses opaque watercolor alongside transparent. Paul Wang paints with common household tools. Thomas Schaller admits to not changing out his water as often as he should. Antonio Masi flips the expectation and paints from dark to light, often opaquely. I imagine each began watercolor as most of us do, adhering to "the rules." After a lot of studio time, they tried something new. They developed a voice they did not foresee, and they continue to push themselves toward the next level.

NWWS wants to give you room to push yourself and to show the results to the world through our exhibitions. We can meet artists where they are and provide the freeing creative space allowing them to go where they need to grow. The recently revised allowable media guidelines do just that, and we trust you to carefully review them and recognize the guard rails as you decide which of your beautiful paintings will be your entry into our prestigious (online) 84th Annual International Open Exhibition. We look forward to another outstanding exhibition with representation of voices from all points on the continuum.

Deborah Roskopf, NWWS Acting President



## Musings of the Editor

### GLORY IN GROWTH, SCRAP PERFECTION

By Katherine L. Wright

Summer is here along with work and life. There are guests, travels, kids, and events. Maybe it's an aging parent, or an emergency when we are trying to prepare for an art show. Things get out of control. We can't do it all. We experience a sense of being overwhelmed, feeling anxiety, and even depression. We all get caught up in stressful situations.

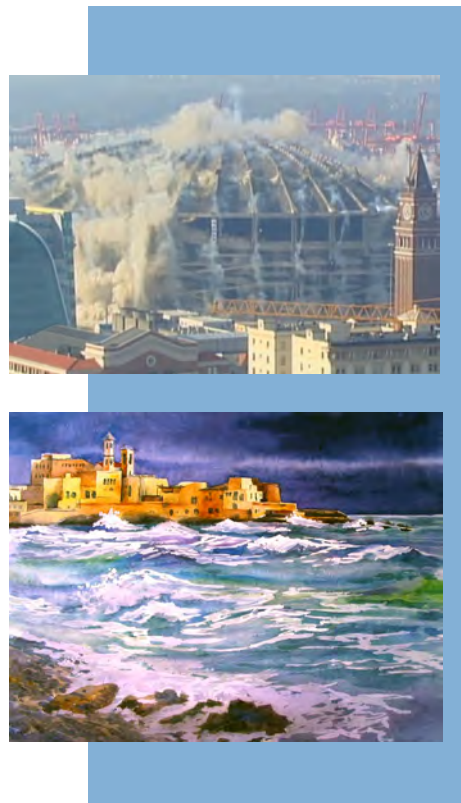
As humans and artists, it's important we look after our mental and physical health. Inspiration and creativity will run out if we're losing ourselves for "all's" sake ... managing a crisis, hustling, and multi-tasking can lead to burnout. Pulling late-night work sessions, sitting at the computer, and physically responding to all the chaos is unsustainable.

It's not very artsy, but routines can help us oversee our energy without sacrificing our well-being.

Intentional good habits can reduce the risk of being overwhelmed and can promote health and personal welfare, such as:

- Make sure not to over-work yourself.
- Make "to do" lists and cross things off once you've done them.
- Tidy up the workspace: it helps us procrastinate less and be more productive.
- Say "yes" only to tasks that are necessary, "no" to things not a priority.
- Disconnect from the digital world every so often.
- Give the mind a rest: do something fun, read a book, meditate.
- Treat the body well: exercise regularly, go for a walk, stretch, drink water.
- Be realistic: have a plan for short-term goals.
- Take more time for big long-term goals, avoid the last-minute scramble.
- It's okay to make mistakes: celebrate your achievements and see the progress.
- Breath! Didn't make the deadline? More possibilities will arrive.

As artists it's important we minimize the consequences of negative emotional situations. Make time for art regularly as a means to relax, destress, and find calm. Glory in growth, scrap perfection. It can be very healing and even liberating.



#### WHEN ARE HOT PRESS ARTICLES AND ADS DUE?

ISSUES COVERING MONTHS	SUBMITTAL DUE DATE
JANUARY FEBRUARY MARCH	DECEMBER 1
APRIL MAY JUNE	MARCH 1
JULY AUGUST SEPTEMBER	JUNE 1
OCTOBER NOVEMBER DECEMBER	SEPTEMBER 1



NORTHWEST  
WATERCOLOR SOCIETY

MEETINGS & CALENDAR UPDATE

**AUGUST 12 — ENTRY DEADLINE, 84<sup>TH</sup> ANNUAL INTERNATIONAL OPEN EXHIBITION**

**EXHIBITION DATES: OCTOBER 25 ~ DECEMBER 29, 2024**

**Exhibition Reception ONLINE | Friday, October 25, 2024 | 5:00– 7:00 pm**

Always our most important event of the year, our 84<sup>th</sup> Annual International Open Exhibition this year will be hosted ONLINE. We are happy to be hosting an online exhibition again — more artists enter online exhibitions than those hosted in galleries. For this reason, NWWWS has set a new policy: every other year, our Open exhibitions will be online. To enter, please [CLICK HERE](#).

**THERE ARE NO AZR CRITIQUE GROUP SESSIONS IN JULY, AUGUST, AND SEPTEMBER.**

**THERE ARE NO GENERAL MEETINGS IN JULY AND AUGUST.**

***NEW MEETING DATE!* SEPTEMBER 17, 2024 — GENERAL MEETING WITH VLADISLAV YELISEYEV**  
Vladislav Yeliseyev is our Juror/ONLINE Workshop Instructor for our 84<sup>th</sup> International Open, and we are excited he will be our demo artist in September! Originally from Russia and trained at the Moscow School of Art, Vlad is an extraordinary watercolor artist with a huge worldwide following. Known for his ability to reflect light in his art, he is especially celebrated for giving a sense of the objects depicted, rather than their details. A signature member of the American Impressionist Society and the National Watercolor Society, Vlad has been featured in many art publications, including on the covers of *Plein Air Magazine* and *Watercolor Magazine*.

***Join us for Vlad's exciting demo!***  
***His unusual style and personality make him an exciting partner with NWWWS.***



**TO FIND OUT MORE ABOUT NWWWS EVENTS, PLEASE VISIT [NWWWS.ORG](http://NWWWS.ORG)**

2024  
NWS ANNUAL INTERNATIONAL

# OPEN *Exhibition*

## CALL FOR ENTRIES

2023 ANNUAL  
OPEN EXHIBITION

FRENCH  
ESCAPADE AWARD

YIDAN GUO,  
"TIBETAN WOMAN  
SERIES,  
GRANDMOTHER"



**OVER \$14,000**  
IN CASH AND  
MERCHANDISE AWARDS

**ENTRY  
DEADLINE  
AUG. 12, 2024**  
6 PM (PACIFIC TIME)

*The 34th Annual International  
Open Exhibition*  
IS NOW ACCEPTING ENTRIES (ONLINE EXHIBITION)

Our most prestigious exhibition attracts stunning entries from around the world. All water media artists are invited to enter.

NWS accepts a wide variety of water media, including acrylic, gouache, and much more. Media guidelines can be found: [FAQ PAGE](#)

- [PROSPECTUS NOW AVAILABLE](#)
- AWARDS RECEPTION ONLINE | 10.25.24
- ONLINE EXHIBITION OPENING | 10.25.24
- ONLINE EXHIBITION ENDS | 12.29.2024



**JUROR | WORKSHOP  
INSTRUCTOR:**  
[VLADISLAV YELISEYEV](#)

Online workshop registration begins  
August 10, 2024

# Northwest Watercolor Foundation

We are pleased to announce the winners of this year's NWWF and Barbara Pitts Award.  
by Ann Breckon

The Northwest Watercolor Foundation is a nonprofit arm of the Northwest Watercolor Society (NWWF). One of the purposes of the Foundation is to support emerging young visual artists by providing financial awards to committed, deserving students.

Established in the early 1990s, the NWWF Scholarship has been presented annually to an outstanding and promising art student. The amount given this year was \$3,500, with \$1,000 going to three winners, and \$250 in honorary awards going to two students.

Those eligible for the Foundation's annual NWWF Scholarship Award must be full-time undergraduate art majors (including graduating college seniors) enrolled in an accredited community college or university in Washington, Oregon, or Idaho, and working in a variety of two-dimensional media.

Students are required to submit an application, five examples of their best work in any 2-D media (other than computer or photography), a descriptive list of images submitted, a letter of recommendation, a photo of themselves, an artist's statement, and a short biography.

We had 27 applicants this year, and our three top winners are: Teri Mori, Mia Bautista and Aubrey Curtis.



**TERI MORI**, a freshman at the Northwest College of Art & Design



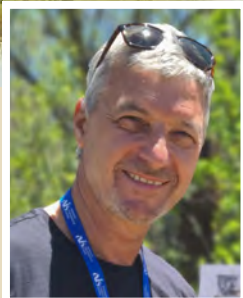
**MIA BAUTISTA**, a junior attending Heritage University



**AUBREY CURTIS**, a junior at BYU-Idaho



# Mastering Watercolor Techniques



## NWWS FOUR-DAY WORKSHOP

with  
Vladislav Yeliseyev  
AIS, NWS

October 28–31, 2024  
9:00 a.m. to 4:00 p.m. PT  
Online on Zoom

REGISTRATION  
Opens Online  
August 10, 2024  
at [NWWS.ORG](http://NWWS.ORG)

### Vladislav will cover the following in this four-day workshop

- Divide sceneries into three focal planes
- Apply the principles of light physics
- Implement Vladislav's color mixing technique
- Explore wet-on-wet, dry brush, tonal gradations, color mixing on rough surfaces, soft edges, scratch-outs, etc.
- How to enhance paintings with intricate details and dynamic brushwork
- Learn to paint in a loose style
- Use the sword liner brush for painting trees, branches, wires, poles, and other intricate details

For more information:  
[www.yeliseyevfineart.com](http://www.yeliseyevfineart.com)

### LIMITED TO 20 PARTICIPANTS

#### TUITION

\$450 NWS Members  
\$525 Non-members

If you are not an NWS member, join *before* registering and save \$75 on the workshop fee.

#### CANCELLATION POLICY

There is a cancellation fee of \$50. If you cancel *before* October 1, you will receive a full refund minus the \$50 cancellation fee. If you cancel *on or after* October 1, the refund will be half of the workshop fee minus the \$50 cancellation fee.



NORTH WEST  
WATERCOLOR SOCIETY

#### FOR MORE INFORMATION

[workshops@nwws.org](mailto:workshops@nwws.org)

[nwws.org](http://nwws.org)

P.O. Box 50837

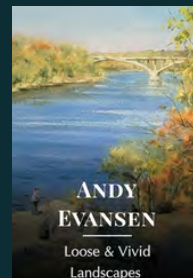
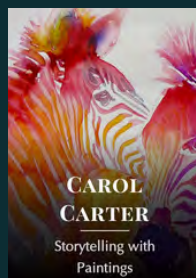
Bellevue, WA 98015

# TERRACOTTA

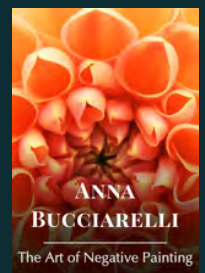
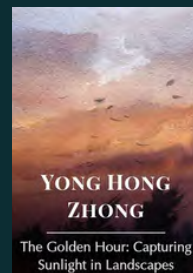
WHERE ARTISTS GROW

Join the **Watercolor Explorer** program -  
a unique online experience where artists thrive!

Our self-paced library, featuring lessons from 20+ globally-renowned watercolorists, lets you learn at your own rhythm.



Engage in weekly live workshops with celebrated artists from around the world, paint along, and get real-time, hands-on guidance.



In our weekly Open Studio, you can experiment with new techniques, explore diverse styles, and connect with a vibrant community of fellow artists.

The Explorer Program is more than just online learning - it's a hub of creativity and passion. Unleash your artistic potential with us!

Terracotta specializes in immersive online art education taught by the world's top artists and educators. [Click here](#) to explore our Video Courses, Workshops, & Programs.



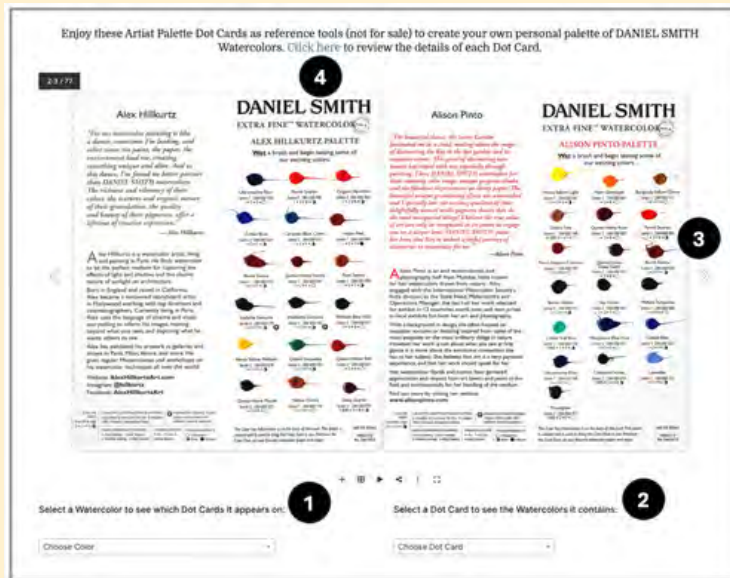
[Terracotta.art](https://www.terraccotta.art)

Hello@terraccotta.art / 425-200-4089



## Curious about color choices? Try our online Dot Card Finder!

Choosing the best palette of colors to complement your unique artistic style can be really exciting, but also a bit challenging. Our family of Brand Ambassadors have helped us create an easy-to-use online tool for you to see which colors they've gathered together for their own personal palettes, featuring their custom DANIEL SMITH Dot Cards.



Search for inspiration from your favorite master watercolorists four different ways:

1. Select a color to see which artists included it on their Dot Card
2. Select an artist to see which colors are listed on their Dot Card
3. Flip through images of each Dot Card, arranged alphabetically by artist name
4. Look at each Dot Card up close to learn more about the artist and click through to each of the Color Stories

Visit [danielsmith.com/dot-card-finder](https://danielsmith.com/dot-card-finder) to explore more than 75 different Dot Cards from DANIEL SMITH Brand Ambassadors!



@danielsmithartistsmaterials

Zoom with us LIVE each week so you can speak directly with John and engage with fellow artists!

[Visit DanielSmith.com](https://danielsmith.com) for details.



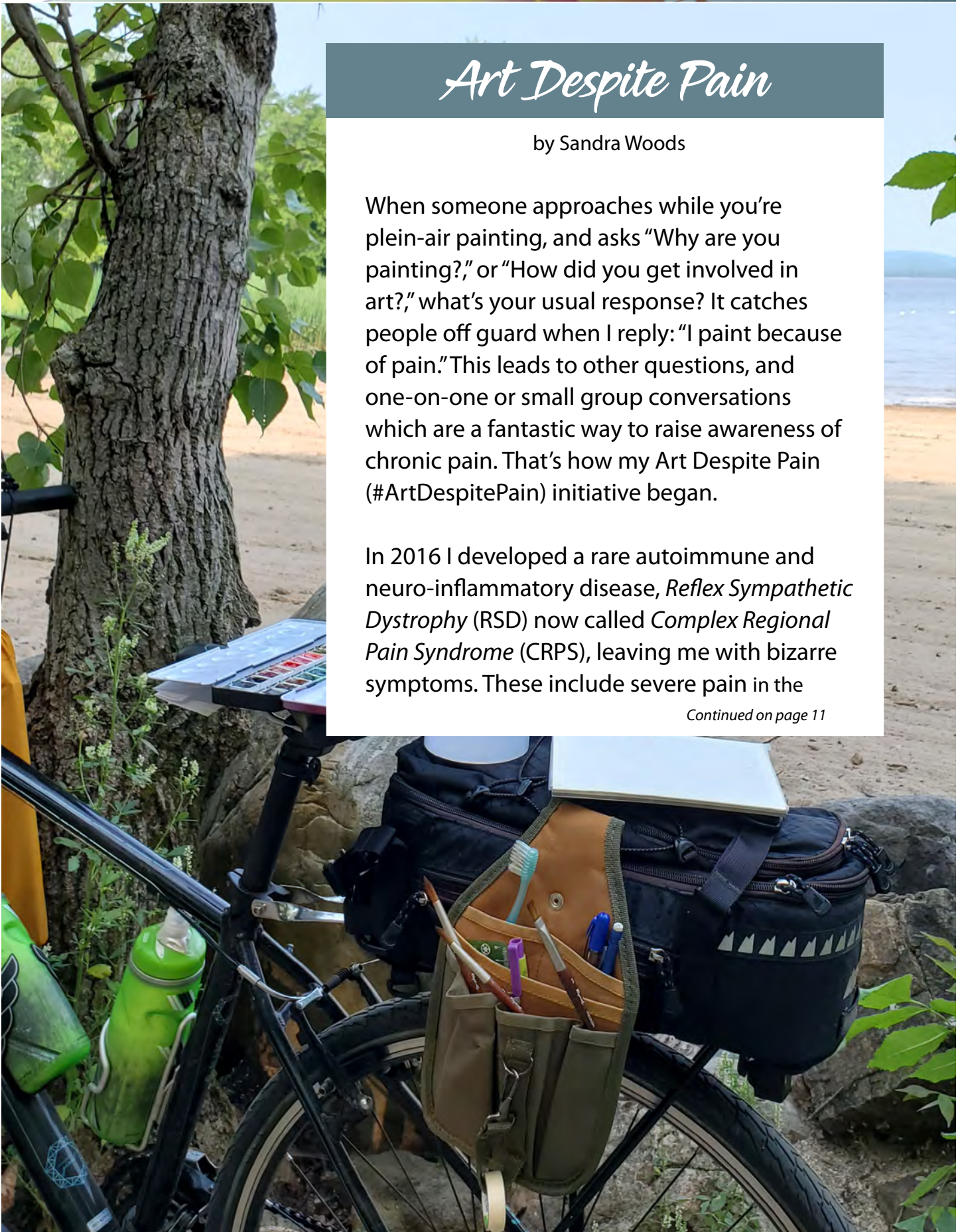
## Art Despite Pain

by Sandra Woods

When someone approaches while you're plein-air painting, and asks "Why are you painting?," or "How did you get involved in art?," what's your usual response? It catches people off guard when I reply: "I paint because of pain." This leads to other questions, and one-on-one or small group conversations which are a fantastic way to raise awareness of chronic pain. That's how my Art Despite Pain (#ArtDespitePain) initiative began.

In 2016 I developed a rare autoimmune and neuro-inflammatory disease, *Reflex Sympathetic Dystrophy* (RSD) now called *Complex Regional Pain Syndrome* (CRPS), leaving me with bizarre symptoms. These include severe pain in the

*Continued on page 11*



## FEATURES

*Art Despite Pain* continued from page 10

bones, joints, nerves, and skin of my right hand and lower arm, localized joint issues, full-body autoimmune fatigue and, since late 2018, a *Mild Cognitive Impairment* (MCI) that ended my healthcare career.

A Royal Canadian Air Force reserves veteran, I'm not one for idleness, so I adapted my healthcare experience to volunteering (to the extent I'm able with cognitive issues)—helping others with chronic pain, becoming a patient partner and co-author in pain research, even teaching pre-med and medical students about pain—all as a volunteer.

In January 2021 I read research that art-learning could serve as brain-plasticity training for chronic pain and cognitive issues and had an “Ah ha!” moment. A lifelong art lover and museum-hound, I'd dreamt of learning to watercolour-paint since childhood, but I literally couldn't draw a stick-figure! I completed every exercise in *Drawing on the Right Side of the Brain* and its companion workbook, then dove into live-online watercolour courses and plein-air workshops.

Exercise and nature were already part of my pain-management plan, so I started carrying watercolour supplies in my bike-pack; CRPS requires resting after each hour of cycling, so I often paint using my bike as an easel. One of my watercolours won the national art awards of the Canadian Pain Society in 2021, and another took first prize (amateur watercolour or gouache) in the *City of Montréal's Pierrefonds Art Contest* (population 1.7 million).

My watercolours have appeared in more than thirty group shows, an April–June 2024 solo exhibition: *Watercolours on Two Wheels*, and several publications. My Art Despite Pain initiative raises awareness of chronic pain, encourages others living with pain to try art and creativity, and reminds us that there can still be beauty and joy in life—despite pain.



# Sail Away With Your Brush: Painting Aboard Sky Pond

by Roxy Podlogar  
(4-part series)

## Part 2, Bula from Fiji - Exploration and Adaptation

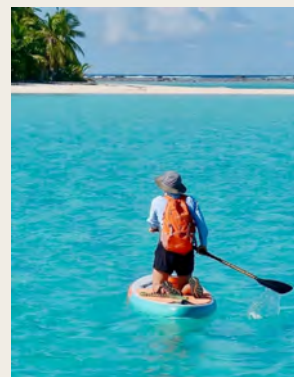


In December 2023, the start of the southern hemisphere's cyclone season, we decommissioned our boat, Sky Pond, and securely strapped her to the ground at Fiji's Vuda Point Marina. In May 2024, we returned to Fiji to set sail. Navigating to our favorite anchorage, I looked forward to new painting challenges.



Finding art supplies is a challenge. Due to South Pacific island economies, purchasing supplies locally is impossible. Shipping to the islands is costly, unreliable, and logistically complex. I can only restock during our annual trips to the United States. This year, I included pigments to mix more neutral greens, such as cobalt turquoise and yellow ochre.

Painting is only possible in anchorages with flat seas and no wind. Mornings tend to be calmer, with wind, fetch, and swell gradually increasing over the day, rocking our boat and making drawing a simple line impossible. To escape the motion, I load up my backpack and paddle to a nearby beach (here, the Tuamotus atolls.)



The South Pacific is humid, and paper will not dry without direct sunlight. During seasonal rains, it can take days for it to dry. Avoiding elaborate subjects, I paint simple atmospheric scenes with large brushstrokes.

*Continued on page 13*

Sail Away with you Brush: Painting Aboard Sky Pond - continued from page 12



Studio space and materials are limited: my works are small. Using a viewfinder measuring 2x2.5 inches, I scale my subject to a 8x10" block of Arches paper.

Isolating a subject in dense, tropical surroundings can be difficult. I aspire, as Monet philosophized, to "capture the air surrounding it," not to simply paint an object.

I look for:

1. Illuminating light and shadows
2. A dominant feature (water, sky, or land)
3. Connected shapes, values, and linear perspectives for depth and interest
4. Interesting positive and negative space



After a value study to simplify the scene and define the focal point, I establish my pallet, consider light and atmospheric conditions, and refer to it throughout the painting process. While it's tempting to overwork the piece, I strive to use less detail, allowing more viewer participation.



The unique landscapes and plant life we encounter challenge me to adapt my skills and pallet. On any given week, we dive in stunning waters, trek through jungles, and call on villages like this plantation on Vanua Balavu, Fiji. During our stay, the villagers warmly welcomed us and allowed many photos, which I later used as reference.



Our lifestyle has taught me the importance of planning, finding favorable painting conditions, and conserving resources. My situation is not a hindrance, but an opportunity to concentrate on my practice and express my experiences through art. As Charlie Parker says, "If you don't live it, it won't come out of the horn."

Sota Tale! Until next time!

# Dr. Ph. Martin's®

— SINCE 1934 —

- WATERCOLOR
- LIQUID ACRYLIC
- INDIA INK
- CALLIGRAPHY COLOR

.....  
THE MOST BRILLIANT LIQUID COLOR PRODUCTS

MADE { IN SMALL BATCHES  
BY HAND  
IN THE UNITED STATES

[WWW.DOCMARTINS.COM](http://WWW.DOCMARTINS.COM)

DR. PH. MARTIN'S® PRODUCTS ARE WATER-BASED AND DESIGNED FOR USE ON PAPER, CANVAS, AND OTHER ART MEDIUMS.  
ALL DR. PH. MARTIN'S® PRODUCTS ARE MANUFACTURED BY SALIS INTERNATIONAL, INC.

Enjoy the best of PBS and more.  
Anytime, anywhere!



CASCADE  PBS

FREE DOWNLOAD: [CASCADEPBS.ORG/APPS](https://cascadepbs.org/apps)





**France**  
**Belgium**  
**Spain**  
**Italy**  
**USA**



## **FRENCH ESCAPADE**

Watercolor / Oil  
Plein Air and Online  
Painting Workshops



**When**  
**Quality**  
**Matters**



[www.frenchescapade.com](http://www.frenchescapade.com)

## Kudos: Summer 2024



*Gentle Strokes*  
Ann Smith



*Peace*  
Ann Smith

Ann Smith, will exhibit 20 award winning paintings at the University Unitarian Church, 6556 35th Avenue NE, Seattle, WA 98115. Opening reception will be Sunday, June 30th, 11 a.m.–1 p.m. You may visit the chapel gallery Sunday mornings through July 28th. Ann is known for her “discovered imagery” style.



*Lehman Cave, Great Basin National Park*  
Suze Woolf

Suze Woolf served as the winter artist at the Great Basin National Park in February of 2024. During her time, she created many watercolors, and a series known as *Nevada Still Lifes*. (<https://suzart.wordpress.com/2024/04/11/great-great-basin/>) *Lehman Cave 1* by Suze Woolf, Winter 2024 Artist-in-Residence. (<https://www.nps.gov/grba/getinvolved/>)



*Disconnected*  
Annie Strack

Annie Strack won merit award and earned signature status in Watercolor Honor Society. Her paintings were also juried into the Illinois Watercolor Society's *40th International Exhibit*, the Colorado Watercolor Society's *33rd National Exhibit*, the Society of Watercolor Artists *International Exhibit*, and the Southern Watercolor Society's *47th National Exhibit*.



*Don't Blink*  
K. L. Wright

Katherine L Wright's painting, *Don't Blink*, was juried into the *2024 Annual Sweet Pea*

*Festival Summer Art Show*. Competition was stiff with just over one-third of entries selected. Exhibit duration– July 5–August 4, 2024. Opening reception Friday, July 12, 6:00 p.m.–8:00 p.m. at ERA Landmark, 8 E. Main, Bozeman, MT.



*Annie Oakley and Friends Shoot Down Oppression*  
Li Turner

Li Turner's painting, *Annie Oakley and Friends Shoot Down Oppression*, was accepted into the ARC Gallery for the NCWCA (*Northern California Women's Caucus for Art*) – sponsored national juried exhibition titled, *ACCESS: An Ordinary Notion*. Paintings will be on view from June 15–July 13, 2024. For more information: [www.arc-sf.com](http://www.arc-sf.com)



*Behind the Scene*  
Voon Wong

Voon Wong's painting, “Behind The Scene,” was accepted into the 2024 American Watercolor Society Associate Members’

Online Exhibition, juried by Elaine Daily-Birnbaum, AWS, DF. The exhibition can be viewed from June 6–August 20, 2024 at <https://americanwatercolorssociety.org>



*Aurora Borealis - The Rockies*  
Sandra Woods

Two of Sandra Woods' watercolors were juried into the *130th annual exhibition of the Women's Art Society of Montreal (WASM)*, focused this year on contemporary and experimental art, at the Viva Vida Gallery in Canada. Her experimental piece, *Aurora Borealis—the Rockies*, was awarded an honorable mention.

**The following artists have earned Signature Membership status**

Lorraine Watry  
Denise Marshall  
Betsy Ward  
Mary Elle

**Two Types of Submissions: News & Announcements FREE to Members LIMIT 50 WORDS**

# SAMISH ISLAND Paint Out

## Paint-out News

by Linda Hulce

Over 50 people attended the latest Paint-out, held MAY 1–5, 2024. Ron Stocke's presentation was energetic and thought-provoking.

Your editor, Katherine Wright, recalls helping set up the first paint-out with our past president Jeannie Davis. That was over 25 years ago. Since then, NWWs has been making the paint-out available to artists at the beautiful, 90-acre Samish Island Campground (about an hour north of Seattle, WA). The view is breathtaking, the ambiance welcoming, and the food delicious. Artists make new friends and reunite with old friends they've not seen in a while. We call it "paint camp," where you can breathe the clean air, concentrate on painting, and leave your obligations behind.

**CLICK HERE** for upcoming Paint-out news.  
<https://www.nwws.org/camp-samish-paintout/>



## AZR News

by Linda Hulce

The Artist Zoom Room, an online event, provides education for artists of all skill levels. AZR invites exceptional, well-known artists to provide education or critiques that moves artists toward a more successful art practice.

Ron Stock and Liana Bennett concluded this year's AZR

program, *The Design Essentials Series*. There are no AZR events in July, August, or September. The AZR committee is working on a fresh, new series for the upcoming 2025 program.

Members are encouraged to check out this past season's recordings and related

information. Please enjoy learning from so many generous artists.

**CLICK HERE** to find the link to the past events available through the summer of 2024.

<https://www.nwws.org/nwws-artist-zoom-room/>

# ARTISTS: APPLY TO COLE GALLERY'S 3RD ANNUAL

## *Edmonds & Beyond* *Plein Air Paint Out*

OVER  
\$2250  
IN AWARDS

2024

Painting Edmonds, Kingston, and the Islands of Washington, 40 local and nationally renowned artists will paint a range of subjects from small town cityscapes and marinas to lush landscapes and ocean beaches. Accepted artists will paint between August 28th through September 8th.

**Exhibition Dates: September 14th–October 14th**  
**Opening Reception & Quick Draw: September 14th**

**Cole Gallery 107 5th Ave S. Edmonds, WA 98020**



*For the Prospectus, go to:* <https://www.onlinejuriedshows.com/Default.aspx?OJSID=58682>

*Sold Out!*



### NORTHWEST WATERCOLOR SOCIETY **WORKSHOPS** *International*



*Join Us in November*

#### **AUGUST WORKSHOP:**

**August 10, 2024 | 8 ~ 11am PDT**

**ONLINE with Zoom!**

*Paul Wang*

**INSTRUCTOR:**

[paul.artsg.wixsite.com/paulwang](http://paul.artsg.wixsite.com/paulwang)



**Björn Bernström** is a fabulous watercolor artist from Sweden and a wildly popular instructor all over the world. A Brand Ambassador for Daniel Smith Artists' Materials, Björn's workshops are stimulating, informative, and always fun. He paints many different subjects, but whatever the subject, his paintings focus on establishing light and mood in every work. His mastery of the attributes of various pigments and "the flow of water" makes his style and techniques unique in the watercolor world.

**Registrations will open August 10.**

[www.org/workshops-international/](http://www.org/workshops-international/)

#### **NOVEMBER WORKSHOP:**

**November 9, 2024 | 10am ~ 1pm PDT**

**ONLINE with Zoom!**

*Björn Bernström*

**INSTRUCTOR:**

[bjornbernstrom.com](http://bjornbernstrom.com)





# MINI TO THE MAX.

## FOUR NEW SIX COLOR HALF-PAN SETS!

Golden Artist Colors is proud to introduce four new six color sets containing colors not previously available in pans from QoR. These sets include our exclusive silicone palette and mixing tin, but now six empty pans allow you to customize your mini starting with a distinct palette of colors for new ways of painting. Visit [qorcolors.com](http://qorcolors.com) to learn more!



©2022 Golden Artist Colors, Inc.



# GREY MATTERS

BY JACK RICHESON & CO.™

Why Grey Matters™?  
perfect for plein air or in the studio

- ◆ non-reflective / anti-glare in sunlight
- ◆ minimize color distortion
- ◆ create a neutral grey space between your eye and your artwork



Call 800.233.2404 to find the dealer nearest you.

[richesonart.com](http://richesonart.com)

PROUD SPONSOR OF THE NORTH WEST WATERCOLOR SOCIETY

The cure for claustrophobia.

Bring the outside into your home.  
800.610.5771 | [pleinairmagazine.com](http://pleinairmagazine.com)



Salida del Sol en el Solsticio de Invierno  
Desde la Piedra con Pocitos, Jorge Obregón, 2022, oil, 23.5 x 47 in., plein air



# workshops workshops workshops

AFFORDABLE  
ACCESSIBLE

- Award-Winning Instructors
- Online Workshops
- Watercolor & Watermedia
- Abstract & Representational
- Informative & Inspirational

**NWWS**  
NORTH WEST  
WATERCOLOR SOCIETY

[NWWS.ORG](http://NWWS.ORG)

REGISTER  
LEARN  
ADVANCE

# Another Plein Air Season in Progress!

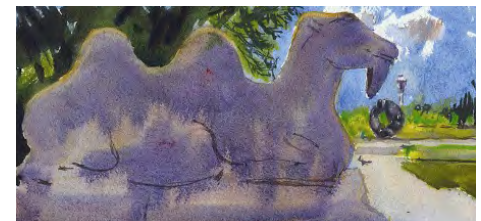
by Suze Woolf



*Karen Schmidt's Georgetown junkyard*



*Steve Pasos on the streets of Georgetown*



*Alexander Hollman's dappled camel statue*

From the beginning of May to the end of October you can find painters—most of them watercolorists—out and about in the Puget Sound area every Wednesday morning. We have traditionally begun our season at Gasworks Park, but have already also hit Volunteer Park, Fishermen's Terminal, Washington Park Arboretum, and the streets of Georgetown. Join us for what is surely one of the most demanding pastimes: painting outdoors from life. It's also one of the most fun, seeing what your friends and colleagues have done as you munch your lunch at our noontime "throw-down."

In many ways, we're all still just getting warmed up—there are at least five more months of places new and old to check out!

(Link for "Join us" is <https://www.nwws.org/plein-air-group>)



*Suzanne Shaw's Arboretum*



*Oksana Limankina painting*

**THE GOLDEN GRIPPER TUBE OPENER**

Helps artists open stubborn or paint-coated tube caps with ease. The Gripper is perfect for artists with diminished manual dexterity or strength.

Made from strong, flexible ABS plastic, it can be used with Williamsburg Oil tubes, QOR Watercolor tubes, and similarly sized paint tube caps.

Use the Gripper on 5 oz paint tubes and smaller.



**Problem Solver! Opens several sizes and brands of paint.**  
Available at art supply stores and online.



*Black Velvet*<sup>®</sup>

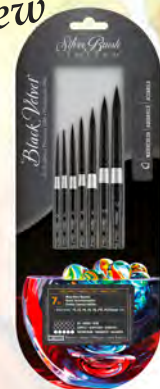
*Perfection in a watercolor brush*



New

*Black Velvet<sup>®</sup> captures color & releases in a slow controlled manner ...a watercolorist's dream come true*

*New \*Voyage travel brush for Pleinair painting*



WC-3207S  
*Must Have Rounds*

Black Velvet<sup>®</sup> is the only brush with enormous capacity to hold fluid, yet snaps back to its original shape. Xtra long tips & fat belly makes for the perfect watercolor artist brush.

[silverbrush.com](http://silverbrush.com)  
[customerservice@silverbrush.com](mailto:customerservice@silverbrush.com)  
Clearwater, FL 33760  
609-443-4900  
[follow us@silverbrush.com](mailto:follow_us@silverbrush.com)

# Summer 2024 Editor's Challenge: Shade

## EDITOR'S CHOICE



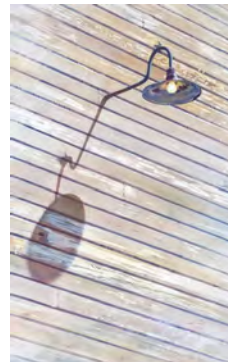
**Under the Cherry Tree**  
Suze Woolf

Editor's comment: I can FEEL the shade of the glorious cherry trees in spring ...

## RUNNERS-UP



**Master and Apprentice**  
Devi Brunsch



**Day Lit**  
Michael Thoreson



**Through the Canopy**  
Roxy Footbridge



**Stroll Through the Rijks**  
Shilpa Bhadsavle

## Editor's Challenge Fall 2024

"Dazzle" is the painting challenge for our next issue. Interpret it as you will. Send your images (up to 2) by September 1, 2024.

– See "Making an Exit" for complete details. –

## THANKS FOR ENTERING



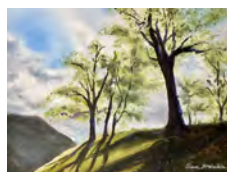
**Fall Shadows**  
Ann Breckon



**Caitlin**  
Deborah Roskopf



**Tracy**  
Deborah Roskopf



**Connemara Light**  
Eileen McMackin



**Only Passing Through**  
K.L. Wright



**Haystack Shadows**  
Loretta Thomas



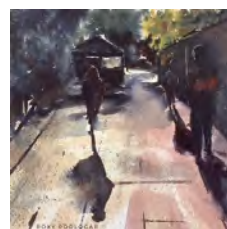
**Garden Cat**  
Marla Nolan



**Amy Rose**  
Molly Murrah



**Chora Sunlight**  
Molly Murrah



**Autumn Rush Hour**  
*Barcelona, Spain*  
Roxy Podlogar



**Cosmic Crocuses**  
Sandra Woods



**The Plane Trees Across the Road**  
Sandra Woods

# SUBMITTING TO HOTPRESS

Hot Press is published quarterly and welcomes your submissions celebrating all things watermedia. The editor reviews submissions and includes items most appropriate, and edits for clarity, content, and space considerations. Submissions are accepted from events occurring within the last 12 months or paid ads covering the next 12 months.

## 2 TYPES OF SUBMISSIONS:

1. **NEWS & ANNOUNCEMENT ITEMS:** FREE to members. LIMIT of 50 words.  
With or without an accompanying image(s). Send text as Word.doc or equal. Send .jpg image separate in same email and labeled. Review more on the "Hot Press Submission Guidelines" tab.
2. **DISPLAY ADS: PAID ADS,** sized at ¼ or ½ page. Print quality artwork, actual size, ready for insertion. Can be linked to website or email. Display ads are submitted to NWWs as complete and are not produced or modified by NWWs. Review more on the "Hot Press Submission Guidelines" tab.

NOTE: PAID AD RATES ARE LOWER FOR NWWs MEMBERS.

## NEWS & ANNOUNCEMENT EXAMPLES INCLUDE:

Your personal achievements, such as awards from JURIED exhibitions, publications such as magazines, book inclusions, or book authorship, special recognition or honors you have received, art educational opportunities, mentions of workshops or classes you teach, and more.

## DISPLAY AD EXAMPLES INCLUDE:

Art educational & travel opportunities, in-person or online workshops & classes, advertising of member or non-member manufactured professional grade art materials, "Call for Entries" for juried or non-juried exhibitions, and more.

## FEATURE, EDUCATIONAL ARTICLES:

Are you a writer and would like to contribute? Please contact the Hot Press editor prior to submission.

## HOW TO SUBMIT FREE NEWS & ANNOUNCEMENTS:

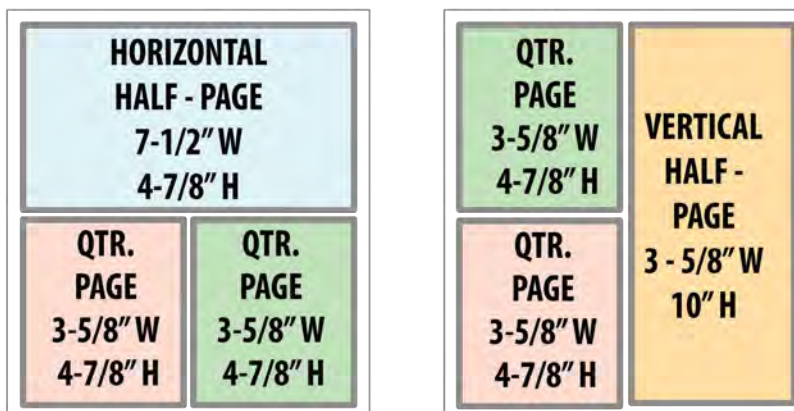
Send by email to: [nwwshotpress@nwws.org](mailto:nwwshotpress@nwws.org).  
Images must be least 150 dpi.

## HOW TO SUBMIT PAID DISPLAY ADS:

Submitted only online.  
Go to [nwws.org](http://nwws.org) / newsletter for submittal form.  
¼ or ½ page sizes should be submitted as 300 dpi resolution, actual size, as .pdf, .jpg, or .png. See ad sizes below.

**SEND QUESTIONS TO:**  
[nwwshotpress@nwws.org](mailto:nwwshotpress@nwws.org)  
**Hot Press Editor: Katherine Wright**

## DISPLAY AD SIZES



(Paper size is 8.5" x 11")

## SUBMISSION DUE DATES:

Dec. 1 for Jan/Feb/March newsletter  
March 1 for April/May/June newsletter

June 1 for July/Aug/Sept newsletter  
Sept.1 for Oct/Nov/Dec newsletter

## Under Construction

Suze Woolf

**Editor's Comment:** Under construction? Or UNDER the construction. How many of you Seattleites have hung out in the cool damp shade of the "ramps to nowhere", located off the 520 bridge? For those of you who don't know the history, see this PBS short for more information; <https://www.pbs.org/video/seattles-ramps-to-nowhere-tkli1v/> Memories of sun and friends and the dank smell of the lake, I hear say it will someday be a real "official" park. Fabulous. Time marches on, and there are more memories to be made. Enjoy your Summer!



## DO YOU HAVE A SUBMISSION FOR THE NEXT NWS NEWSLETTER?

**DEADLINE: September 1 for the Fall Newsletter**

Send to [NWSHotPress@gmail.com](mailto:NWSHotPress@gmail.com)

### ■ ARE YOU A RECENT AWARD WINNER?

Send us an image of your award-winning painting and a simple explanation of the what/when/where. We'll show it off for you. Please submit the jpeg of **YOUR ART LABELED WITH YOUR NAME AND TITLE**; Size should be 500 KB to 1.5 MB.

### EDITOR'S CHALLENGE FALL 2024

- **FALL 2024: "DAZZLE"** is the painting challenge for our next issue. Interpret it as you will, and send your painting images (up to 2) to us by **SEPTEMBER 1, 2024**. Subject line: "NWS Fall 2024 Editor's Challenge." Size: 500 KB to 1.5 MB, 300 dpi. Please submit the jpeg of **YOUR ART LABELED WITH YOUR NAME AND TITLE**.

### ■ DO YOU KNOW OF AN "ARTIST OPPORTUNITY"?

such as an art competition or special workshop that our members would love to know about? We can announce it for you. NOTE: 50 words max.

### ■ IF YOUR SUBMISSION IS AN ADVERTISEMENT,

a pdf (preferred) or a jpeg is required. Please make sure it is at least 150 dpi.

### ■ ARE YOU A WRITER AND HAVE AN IDEA FOR A NEWSLETTER ARTICLE that artists would enjoy?

We're looking for great articles.

**NOTE NEW EMAIL:** Contact Katherine at [NWSHotPress@gmail.com](mailto:NWSHotPress@gmail.com)